

PANORAMA COMMUNITY SCHOOL DISTRICT

Comprehensive student achievement and character development through educational excellence

NOTICE OF PUBLIC MEETING

You are hereby notified that the Board of Directors of the Panorama Community School District will meet at 5:30 pm on the 13th day of October, 2014 for a work session & regular board meeting in the District Board Room located at 701 W Main Street in Panorama, Iowa.

The tentative agenda is as follows:

BOARD MEETING AGENDA
DISTRICT BOARD ROOM

October 13th, 2014
5:30 PM

5:30 PM: The board will hold a work session to discuss educational priorities.

Regular Meeting to follow @ 6:30pm:

Call to Order

- I. **Roll Call**
- II. **Approve Meeting Agenda**
- III. **Good News**
- IV. **Consent Items**
 - A. Minutes of the September 8th, 2014 Regular Meeting & October 6th, 2014 Work Session #2 thru #6
 - B. Bills/VISA #7 thru #27
 - C. Financial Report #28 thru #33
 - D. Open Enrollment #34
- V. **Reports**
 - A. Principal Reports #35 + #36
 - B. Superintendent Report
- VI. **Discussion/Information Topics**
 - A. School Board Recognition
 - B. 2014-15 Certified Enrollment (preliminary) #37
 - C. Athletic Complex Project approval timeline #38
 - D. CTE and Carl Perkins requirements, coordination #39
 - E. Upcoming Dates:
 - Regular Board Meeting – November 10th, 2014 @ 6:30 p.m.
 - IASB Delegate Assembly and Annual Convention – November 19-21
- VII. **Action Items**
 - A. CTE Coordinator Stipend #40
 - B. 2014-15 Cooperative Sharing Agreement – Soccer (Perry) #41
 - C. Approve FY15 Certified Annual Report (CAR) #42
 - D. SBRC modified allowable growth for FY14 Special Education Deficit #43
 - E. Server Purchase #44
 - F. Locker Room Renovation #45 thru #48
- VIII. **Adjourn**

PANORAMA COMMUNITY SCHOOL DISTRICT
701 W MAIN ST
PANORA, IA 50216

Sarah Sheeder
Secretary
Board of Directors

**Panorama Community School District
September Organizational/Regular School Board Meeting**

Date: 9/8/2014
Time: 6:30 pm
Location: Panorama District Board Room

Teacher Reception

The school board members hosted a reception at 6:15 to welcome the following new teachers:

- Sheena Bass (Elem Reading & Partner Teacher)
- LeRoy Berentschot (Elementary Art)
- Carla Church (TAG)
- Theresa Christensen (6th Grade)
- Michael Geneser (Spanish)
- Scott Gadelmann (Social Studies)
- Angela Gloede (3rd Grade)
- Steven Hameister (Food Science)
- Cara Heffernan (3rd Grade)
- Jessica Prince (Preschool)
- Jacob Schudlach (3rd Grade)

Call to Order

The Panorama Community School District Board of Education met in an organizational/regular meeting on September 8th, 2014 in the district board room located at the middle/high school. The meeting was called to order by Bryce Wilke, President, at 6:30 pm.

Attendees

Board Members Present:

Board Members Tom Arganbright, Jon Stetzel, Deb Douglass, Greg Irving and Bryce Wilke were present.

Administrators Present:

Kathryn Elliott (Superintendent), Mark Johnston (MS-HS Principal), Mary Breyfogle (Elem Principal/School Improvement Coordinator) and Sarah Sheeder (Business Manager/Board Secretary) were present.

Others:

Gordon Castile, Karen Gerlich, Lora Koch

Agenda

Changes to Agenda (if any):

T. Arganbright motioned to approve the agenda as posted.

J. Stetzel seconded.

Motion carried unanimously.

Organizational Meeting:

Election & Oath of Office – President

T. Arganbright nominated Bryce Wilke to serve as board President.

It was moved by T. Arganbright and seconded by J. Stetzel to cease nominations and name Bryce Wilke as President of the 2014-15 school board. Motion carried unanimously.

Election & Oath of Office – Vice President

D. Douglass nominated Tom Arganbright to serve as board Vice President.

It was moved by G. Irving and seconded by D. Douglass to cease nominations and name Tom Arganbright as Vice President of the 2014-15 school board. Motion carried unanimously.

Election & Oath of Office – School Business Official

It was moved by J. Stetzel and seconded by G. Irving to name Sarah Sheeder as School Business Official of the 2014-15 school board. Motion carried unanimously.

Adopt Rules & Procedures

It was moved by G. Irving and seconded by D. Douglass to follow modified Robert's Rules of Order to conduct board meetings. Motion carried unanimously.

Determine Date & Time of Regular Board Meetings

It was moved by D. Douglass and seconded by T. Arganbright to hold regular board meetings the second Monday of every month at 6:30pm. Motion carried unanimously.

Regular Meeting:

Good News

The following "Good News" items were shared:

- The Student Council members have been writing, interviewing and organizing the first "Panther Print" which will be printed in the Guthrie County Vedette newspaper.
- Thank you to Josh Arganbright who donated his time, use of equipment and his crew to get the new elementary playground installed. In addition, thank you to the following people who also volunteered time for this project: Keith Johannes, Brian Simmons, Darin Mills, Dan Breyfogle, Brody & Kaleb Stogdill, Daniel & Aaron Irving and Grant Zajicek.
- Congratulations to Greg Randel and the transportation department for having such a clean School Bus Inspection on August 26th. Of the 19 vehicles inspected, only 2 had minor issues that warranted a 30-day fix.
- The Executive Director of the Governor's STEM Advisory Council commended Panorama HS Science Teacher Max Scott for participating in an intensive, 6-week Real World Externship for STEM teachers over the summer.
- Nutrition Director Bob Rogers thanked Ms. Elliott for mopping the kitchen floor when staff members were too busy to get it done. Mr. Rogers expressed his appreciation to be working at a district where even the Superintendent steps in when needed.
- Bryice Wilke commended Driver's Ed Instructor Bill Wright for his continued commitment to the district's Driver's Ed program.

Consent Items

G. Irving motioned to approve the consent items.

J. Stetzel seconded.

Motion carried unanimously.

Consent items included minutes of the August 11th, 2014 regular meeting, the bills/VISA as presented, six open enrollment "out" applications and four open enrollment "in" applications for the 2014-15 school year. The board accepted resignations from Deanna Roy (Cook), Deb Brehmer (Junior Class Sponsor) and Laurie Mills (Concessions Manager). The board also approved the following contracts:

Melissa Hochstetler	Cook	\$12,852.00
Emily Stewart	Concessions Manager	\$6,000.00
Kyler Kudart	JH Track Coach	\$1,550.00
Cara Heffernan	JH Track Coach	\$1,550.00
Joyce Bahrke	Basketball Scorer	\$1,116.00
JoAnn Eason	Volleyball Scorer	\$744.00
Jim Bauch	Junior Class Sponsor	\$1,395.00

Reports

Mark Johnston, MS/HS Principal

- Mr. Johnston shared data on ACT participation of the senior class for the past 5 years (2010-2014). The data shows that the percentage of seniors taking to test has increased from 54% in 2010 to 68% in 2014. In addition, test results show that Panorama students score at or above state and national scores. A deeper look at this data revealed that the more courses taken at Panorama in each tested area resulted in higher ACT scores.
- MAP testing is in progress for all middle and high school students and will be completed within the new few weeks.

Reports, continued

Mary Breyfogle, Elementary Principal

- MAP tests are being given to all 1st through 5th graders. The decision was made not to test the Kindergarten class at this time to allow time for students to improve their computer skills.
- FAST assessments will be given to all students in grades K through 5 to assess early reading skills and reading fluency. These assessments will replace DIEBELS that has been given to students in prior years.
- A separate Homecoming pep rally will take place at the elementary on September 19th to avoid conflicts with Grandparent's Day which will also be held on September 19th.

Kathy Elliott, Superintendent

- Recently a settlement was reached in the class action lawsuit against Martin Brothers. Because of this settlement, parents of Panorama students are eligible to receive a refund in the amount of \$3.50 per student per year enrolled beginning in the 2008-09 school year through the 2013-14 school year. Communication will be sent to parents from the district on how to file a claim.
- The new high school bleachers were delivered to the school today. It will take crews three to four days to assemble and install the bleachers.
- Ms. Elliott has followed up with SVPA, the architect firm that has been assisting the district with the athletic complex and facility planning. Ms. Elliott recommended a work session one week prior to the next regular board meeting for the board to meet with SVPA and discuss possible projects. This will allow the board to take formal action at the October 13th regular board meeting.
- Ms. Elliott reported that she is very pleased and excited about the work being done in the district by Teacher Leaders.
- The district continues to analyze the rollout plan for the one-to-one initiative which is scheduled to take place at the start of the 2015-16 school year.

Discussion/Information Topics

2014 Legislative Session – Changes Affecting Schools

Ms. Elliott and Mrs. Breyfogle reported on new legislation affecting schools in regard to early reading literacy.

Mrs. Breyfogle reported that the spirit of this legislation is to identify students who are struggling with reading early in their learning to ensure future success. The legislation requires that all students be proficient in reading by the end of the third grade and includes many requirements for assessing students and providing additional instruction to those who are not proficient. The good news for the district is that many of these requirements are already in place which puts Panorama far ahead of many other districts.

Ms. Elliott added that the district will most likely have to start offering a summer school program in order to meet the requirements of the legislation. The district will need to start working on a plan to implement summer school following the 2014-15 school year.

IASB Annual Convention

Ms. Elliott reported that the Iowa Association of School Boards will hold the annual school board convention in Des Moines November 19th-21st. All board members were encouraged to attend.

Upcoming Dates

- Educational Priorities/Practices Board Work Session – October 13th, 2014 @ 5:30 p.m.
- Regular Board Meeting – October 13th, 2014 @ 6:30 p.m.

Action Items

2014-15 Fundraising Requests

G. Irving motioned to approve the 2014-15 fundraising requests as presented.

D. Douglass seconded.

Motion carried unanimously.

Geothermal System Repair

T. Arganbright motioned to approve repairing the geothermal system at the high school for an estimated cost of \$5,732.40.

J. Stetzel seconded.

Motion carried unanimously.

Action Items, continued

Appoint Delegate for the IASB Delegate Assembly

J. Stetzel motioned to appoint Bryce Wilke to represent the Panorama School Board at the 2014 IASB Delegate Assembly.
T. Arganbright seconded.
Motion carried unanimously.

Appoint Board Representative to the County Conference Board

G. Irving motioned to appoint Tom Arganbright as the Panorama School Board representative on the County Conference Board.
J. Stetzel seconded.
Motion carried unanimously.

SBRC Modified Allowable Growth for FY14 Special Education Deficit

J. Stetzel motioned to approve SBRC modified allowable growth and supplement aid for the District's 2013-14 Special Education Deficit of \$171,820.32.
D. Douglass seconded.
Motion carried unanimously.

2nd Reading Re vised Board Policy 501.13 – Compulsory Attendance

D. Douglass motioned to approve the 2nd reading of revised board policy 501.13 – Compulsory Attendance.
G. Irving seconded.
Motion carried unanimously.

Adjournment

Meeting adjourned at 7:31 pm. The next regular board meeting is set for October 13th at 6:30pm (work session prior to meeting at 5:30).

Sarah Sheeder,
Board Secretary

Board President

Board Secretary

Date

Date

**Panorama Community School District
School Board Work Session**

Date: 10/6/2014
Time: 5:30 pm
Location: Panorama Secondary School Board Room

Call to Order

The Panorama Community School District Board of Education met in a work session on 10/06/2014 in the district board room of the Panorama Secondary school. The work session was called to order by Bryce Wilke, Board President at 5:30pm.

Attendees

Board Members Present:

Board Members Bryce Wilke, Deb Douglass, Tom Arganbright and Jon Stetzel were present. Greg Irving was absent.

Administrators Present:

Kathryn Elliott (Superintendent), Sarah Young (Business Manager/Board Secretary), Mark Johnston (MS/HS Principal), Erin Ambrose (Operations Director).

Others:

Lora Koch, Greg Thompson, Vitus Bering (SVPA) and Ron Paskach (SVPA).

Work Session

Work Session Discussion

Vitus Bering and Ron Paskach from SVPA Architects were present to discuss upcoming projects to the locker rooms and the athletic complex. The board was presented with a floor plan of the proposed locker room renovation project. In addition, the board was presented with four different options to consider for the track/athletic complex project.

Adjournment

Work session adjourned at 7:00pm

Sarah Sheeder,
Board Secretary

Board President

Board Secretary

Date

Date

**PANORAMA COMMUNITY SCHOOL
LUNCH REPORT
2014-2015**

TOTAL LUNCHESES SERVED SEPTEMBER 2014:		12,176
“A” Lunches Served	7,051	
Adult Lunches – Total	963	
Reduced Student	1,089	
Free Student	4,036	
Free Adult	322	
TOTAL BREAKFASTS SERVED SEPTEMBER 2014:		4,005
“A” Breakfasts	1,398	
Adult Breakfasts	149	
Reduced Student	528	
Free Student	2,079	
Free Adult	0	

Board Report - For Board

Unposted; Batch Description OCTOBER 2014 NUTRITION-0007

<u>Vendor Name</u>	<u>Invoice</u>	<u>Description</u>	<u>Amount</u>	
Checking	2	Fund: 61 NUTRITION FUND		
ANDERSON ERICKSON DAIR CO	20141008	MILK/ORANGE JUICE	6,176.82	
		Vendor Total:		6,176.82
BERNARD FOOD INDUSTRIES, INC.	00696787	GROCERY	1,246.72	
BERNARD FOOD INDUSTRIES, INC.	00697537	GROCERY	197.60	
		Vendor Total:		1,444.32
GOODWIN TUCKER GROUP	176987	MAINTENANCE	132.00	
GOODWIN TUCKER GROUP	550877	MAINTENANCE	110.00	
		Vendor Total:		242.00
HOMETOWN FOODS	20141008	GROCERY	14.15	
		Vendor Total:		14.15
INLAND LEASING	58811152	VENDING MACHINE	276.48	
		Vendor Total:		276.48
KECK INC	20141008	GROCERY	1,060.36	
		Vendor Total:		1,060.36
MARTIN BROTHERS DISTRIBUTING COMPANY	20141008	VENDING	2,012.77	
MARTIN BROTHERS DISTRIBUTING COMPANY	20141008-0001	GROCERY	18,665.69	
MARTIN BROTHERS DISTRIBUTING COMPANY	5334475	CATERING	246.41	
		Vendor Total:		20,924.87
PANORAMA COMMUNITY SCHOOL-GEN FUND	20141008-0002	PAYMENT ON INTERFUND LOAN	17,929.43	
PANORAMA COMMUNITY SCHOOL-GEN FUND	20141008-0003	SEPTEMBER SALARIES & BENEFITS	14,034.11	
		Vendor Total:		31,963.54
SARA LEE BAKERY GROUP/EARTHGRAINS	52173002663	BREAD/BAKERY	78.57	
SARA LEE BAKERY GROUP/EARTHGRAINS	52173002665	BREAD/BAKERY	87.35	
SARA LEE BAKERY GROUP/EARTHGRAINS	52173002710	BREAD/BAKERY	75.15	
SARA LEE BAKERY GROUP/EARTHGRAINS	52173002776	BREAD/BAKERY	129.45	
SARA LEE BAKERY GROUP/EARTHGRAINS	52173002820	BREAD/BAKERY	54.00	
SARA LEE BAKERY GROUP/EARTHGRAINS	52173002879	BREAD/BAKERY	168.78	
SARA LEE BAKERY GROUP/EARTHGRAINS	52173002881	BREAD/BAKERY	75.15	
SARA LEE BAKERY GROUP/EARTHGRAINS	52173002924	BREAD/BAKERY	83.69	
SARA LEE BAKERY GROUP/EARTHGRAINS	52173002984	BREAD/BAKERY	62.04	
SARA LEE BAKERY GROUP/EARTHGRAINS	52173003088	BREAD/BAKERY	106.29	
SARA LEE BAKERY GROUP/EARTHGRAINS	52173003090	BREAD/BAKERY	13.20	
		Vendor Total:		933.67
		Fund Total:		63,036.21
		Checking Account Total:		63,036.21

8

Board Report - For Board

Unposted; Batch Description OCTOBER 2014-ACTIVITY-0001

<u>Vendor Name</u>	<u>Invoice</u>	<u>Description</u>	<u>Amount</u>	
Checking	3	Fund: 21 ACTIVITY FUND		
ALL-AMERICAN TIMING	20141006	XC TIMING	640.00	
			Vendor Total:	640.00
ATHLETICA, INC	INV99621	BOW	21.98	
			Vendor Total:	21.98
AUDUBON COMMUNITY SCHOOLS	20141006	XC-ENTRY-9/26/14	100.00	
			Vendor Total:	100.00
BAGLEY LOCKER	20140924	CONCESSIONS	768.00	
BAGLEY LOCKER	20141008	CONCESSIONS	384.00	
			Vendor Total:	1,152.00
BALLARD OF HUXLEY COMMUNITY SCHOOL	20140915	XC-ENTRY-9/15/14	145.00	
			Vendor Total:	145.00
BORCHERDING, DIANE	20141001	V-VB-9/25/2014	105.00	
			Vendor Total:	105.00
BORCHERDING, DON	20141001	V-VB-9/25/14	105.00	
			Vendor Total:	105.00
BOWHAY, JERRY	20140924	V-FB-9/19/2014	105.00	
			Vendor Total:	105.00
BREADEAUX PIZZA	20141006	CONCESSIONS	729.00	
			Vendor Total:	729.00
BUERTING, JEFF	20140924	V-FB-9/19/2014	105.00	
			Vendor Total:	105.00
CAM COMMUNITY SCHOOL DISTRICT	20141006	VB-TOURN-10/11/14	75.00	
			Vendor Total:	75.00
CAMPUS TEAM WEAR	PP0447735010 12	POMS	26.90	
			Vendor Total:	26.90
CUSTOM INK	466734	JH TSHIRTS	529.54	
			Vendor Total:	529.54
DECKER SPORTING GOODS	20141006	VOLLEYBALLS/NET SYSTEM/JH VOLLEYBALL CAR	3,306.00	
DECKER SPORTING GOODS	AAD073979- AJ02	TAPE	110.00	
DECKER SPORTING GOODS	AAD074711- AD00	TAPE	96.00	
DECKER SPORTING GOODS	AAD074716- AB01	ATHLETIC SUPPLIES	271.00	
DECKER SPORTING GOODS	AAD074716- AJ02	TAPE	60.00	
DECKER SPORTING GOODS	AAN006695- AJ01	ATHLETIC SUPPLIES	60.00	
			Vendor Total:	3,903.00
DEMPSTER, RUSS	20140924	V-FB-9/19/2014	105.00	
			Vendor Total:	105.00
DINKLA, JORDAN	20140924	JVFB-9/22/2014	80.00	
			Vendor Total:	80.00
DOBEL, CHRIS	20141001	V-FB-9/26/14	105.00	
			Vendor Total:	105.00
GODFREY PRINTING & PROMOTIONS	2739	HOMECOMING TSHIRTS	1,722.00	
			Vendor Total:	1,722.00
GONZALES, SCOTT	20141001	STARTER	130.00	
			Vendor Total:	130.00
GRAPHIC EDGE, THE	20140924	TSHIRT/SWEATSHIRTS-RESALE	1,628.37	
GRAPHIC EDGE, THE	807112	TSHIRTS	681.81	
GRAPHIC EDGE, THE	814696	CHEER WARMUPS	41.88	

<u>Vendor Name</u>	<u>Invoice</u>	<u>Description</u>	<u>Amount</u>	
GRAPHIC EDGE, THE	815512	DEFENSE TSHIRTS	67.61	
GRAPHIC EDGE, THE	816840	XC APPAREL	89.81	
		Vendor Total:		2,509.48
HARWOOD, JORGE	20140915	JV-FB-9/8/14	80.00	
		Vendor Total:		80.00
HEARTLAND EDUC AGENCY #11	30205	POSTERS	50.00	
HEARTLAND EDUC AGENCY #11	30672	OFFICIALS FORMS	61.80	
		Vendor Total:		111.80
HIGGINS, JASON	20141007	JVFB-10/6/2014	80.00	
		Vendor Total:		80.00
HOMETOWN FOODS	1000027615	CONCESSIONS	149.70	
HOMETOWN FOODS	100020022	HOMECOMING	33.18	
		Vendor Total:		182.88
IOWA FCCLA	1314-115	STATE LEADERSHIP CONF	715.00	
		Vendor Total:		715.00
IOWA HIGH SCHOOL MUSIC ASSN.	107	ALL STATE REGISTRATION	189.00	
		Vendor Total:		189.00
IOWA HIGH SCHOOL SPEECH ASSN.	20140924	COACHES CONVENTION	250.00	
		Vendor Total:		250.00
IOWA JUNIOR HIGH SCHOOL STUDENT COUNCIL	20141009	REGISTRATION/STATE DUES	145.00	
		Vendor Total:		145.00
J. W. PEPPER & SON, INC.	11A11517	VOCAL MUSIC	27.30	
		Vendor Total:		27.30
JEFFERSON-SCRANTON CSD	20140915	XC-ENTRY FEE-9/11/14	95.00	
		Vendor Total:		95.00
KD PORTABLES	100114	PORTABLE-FB/XC	910.00	
		Vendor Total:		910.00
LAKE LUMBER	864420	LUMBER FOR PLAY	27.22	
		Vendor Total:		27.22
LIDS TEAM SPORTS	533993	SOFTBALL JACKETS-RESALE	686.97	
		Vendor Total:		686.97
MAIN STREET DANCE STUDIOS	154011166	DRILL TEAM COSTUMES	618.10	
		Vendor Total:		618.10
MAINE, SCOTT	20140915	JV-FB-9/8/14	80.00	
MAINE, SCOTT	20141001	V-FB-9/26/14	105.00	
		Vendor Total:		185.00
MCCREA, KEVIN	20140915	MS-VB-9/11/14	70.00	
MCCREA, KEVIN	20140924	JHVB-9/23/2014	70.00	
MCCREA, KEVIN	20140924-0001	JHVB-9/15/2014	70.00	
MCCREA, KEVIN	20141006	V-VB-9/30/14	105.00	
MCCREA, KEVIN	20141007	MSVB-10/6/14	70.00	
MCCREA, KEVIN	20141009	V-VB-10/7/14	105.00	
		Vendor Total:		490.00
MEYER, BRIAN	20141001	V-FB-9/26/2014	105.00	
		Vendor Total:		105.00
MILLS, LAURIE	20141006	CONCESSION	122.19	
		Vendor Total:		122.19
MORRISON, MIKE	20140924	V-FB-9/19/2014	105.00	
		Vendor Total:		105.00
NATIONAL FFA ORGANIZATION	CONV-REG-44261	REGISTRATION	351.00	
		Vendor Total:		351.00

10

<u>Vendor Name</u>	<u>Invoice</u>	<u>Description</u>	<u>Amount</u>	
OSTERCAMP, EMILY	20141006	CONCESSIONS	452.92	
OSTERCAMP, EMILY	20141006-0001	SD CARD FOR CAMERA	29.86	
OSTERCAMP, EMILY	20141006-0002	CONCESSIONS	202.32	
		Vendor Total:		685.10
OSTLUND, SHAWN	20140924	V-FB-9/19/2014	105.00	
		Vendor Total:		105.00
OSWALD, JOEL	20140915	JV-FB-9/8/14	80.00	
OSWALD, JOEL	20141001	V-FB-9/26/14	105.00	
		Vendor Total:		185.00
PANORAMA CATERING	082914	BREAKFAST-8/29/14	101.40	
PANORAMA CATERING	090514	9/5/14-BREAKFAST	101.40	
PANORAMA CATERING	091214	BREAKFAST-9/12/14	97.50	
PANORAMA CATERING	091914	9/19/14-BREAKFAST	107.25	
PANORAMA CATERING	20141006	SACK LUNCH-9-12-14	156.00	
		Vendor Total:		563.55
PANORAMA COMMUNITY SCHOOL-GEN FUND	20141008	COPIES-PLAY	8.00	
PANORAMA COMMUNITY SCHOOL-GEN FUND	20141008-0001	COLOR COPIES	2.50	
		Vendor Total:		10.50
PANORAMA DIAMOND SPORTS	16	BASEBALL MEMBERSHIP	600.00	
PANORAMA DIAMOND SPORTS	20141006	SOFTBALL MEMEBERSHIP	600.00	
		Vendor Total:		1,200.00
PANORAMA VENDING	20141006	CONCESSIONS	292.80	
PANORAMA VENDING	20141008	CONCESSION	244.80	
		Vendor Total:		537.60
PAULEY, CRAIG	20140915	JH-FB-9/11/14	70.00	
PAULEY, CRAIG	20141007	JVFB-10/6/14	80.00	
		Vendor Total:		150.00
PEPSI COLA	86159557	CONCESSIONS	672.03	
PEPSI COLA	86665108	CONCESSIONS	448.02	
PEPSI COLA	86665109	CONCESSIONS	547.58	
		Vendor Total:		1,667.63
PERKINS, FRED	20141001	V-FB-9/26/14	105.00	
		Vendor Total:		105.00
PERRY COMMUNITY SCHOOLS	20140915	VB-TOURN-9/11/14	100.00	
		Vendor Total:		100.00
RITTMAN, DAVID	20140915	JV-FB-9/8/14	80.00	
		Vendor Total:		80.00
ROBERTS, JAMES	20141006	TSA PARTS	102.46	
		Vendor Total:		102.46
ROSSOW, HAL	20140915	JH-FB-9/11/14	70.00	
		Vendor Total:		70.00
SAMS CLUB/GEGRB	20141006	CONCESSIONS	1,884.27	
		Vendor Total:		1,884.27
SCHOTT, ADAM	20141007	JV-FB-10/6/14	80.00	
		Vendor Total:		80.00
SORENSEN, DIRK	20140915	JH-FB-9/11/2014	70.00	
SORENSEN, DIRK	20141007	JV-FB-10/6/14	80.00	
		Vendor Total:		150.00
SOUTH CENTRAL CALHOUN	20140915	9/13/14-VB-TOURNAMENT	85.00	
		Vendor Total:		85.00
SOUTH HAMILTON HIGH SCHOOL	20141009	HS/MS-CROSS COUNTRY	130.00	
		Vendor Total:		130.00

11

Board Report - For Board

Unposted; Batch Description OCTOBER 2014-ACTIVITY-0001

<u>Vendor Name</u>	<u>Invoice</u>	<u>Description</u>	<u>Amount</u>	
SWIBA	20140924	MS HONOR BAND	18.00	
		Vendor Total:		18.00
SWIBA	20140915	DUES	25.00	
		Vendor Total:		25.00
THOMPSON, GREG	20140924	XC SUPPLIES	46.19	
		Vendor Total:		46.19
THOMPSON, SEAN	20141006	V-VB-9/30/14	105.00	
		Vendor Total:		105.00
WAUKEE COMM SCHOOL DISTRICT	20140915	VB-TOURN-9/20/14	115.00	
		Vendor Total:		115.00
WERNER, CRAIG	20141009	V-VB-10/7/14	105.00	
		Vendor Total:		105.00
WILSON, BRIAN	20140924	JVFB-9/22/2014	80.00	
		Vendor Total:		80.00
WOOD, MARTIN	20140915	JH-FB-9/11/14	70.00	
		Vendor Total:		70.00
		Fund Total:		26,325.66
		Checking Account Total:		26,325.66

12

Activity Fund Balance Report - Summary - Exclude Encumbrances

09/2014 - 09/2014

Excluding Zeros; Beginning Month 09/2014; Processing Month 09/2014; Fund Number 21

Panorama CSD
10/06/2014 2:29 PM

Fund: 21 ACTIVITY FUND

Chart of Account Number	Chart of Account Description	Beginning Balance	Expenses	Revenues	Balance Change	Balance
21 729 000 1923 000	DARE	217.08	0.00	0.00	0.00	217.08
21 729 000 6110 910	DRAMA	3,109.12	452.75	0.00	0.00	2,656.37
21 729 000 6120 910	SPEECH	1,418.71	50.00	0.00	0.00	1,368.71
21 729 000 6615 920	VOLLEYBALL	1,448.72	1,120.80	1,543.00	0.00	1,870.92
21 729 000 6640 920	TRACK	98.21	1,065.91	24.00	950.00	6.30
21 729 000 6645 920	CROSS COUNTRY	21.42	294.54	2,540.50	0.00	2,267.38
21 729 000 6660 920	GOLF	3.98	466.20	0.00	470.00	7.78
21 729 000 6665 920	STRENGTHING/CONDITIONING	0.00	900.00	0.00	5,000.00	4,100.00
21 729 000 6710 920	GIRLS BASKETBALL	4.65	0.00	0.00	0.00	4.65
21 729 000 6715 920	BOYS BASKETBALL	31.77	0.00	0.00	0.00	31.77
21 729 000 6720 920	FOOTBALL	12,296.83	5,192.73	4,470.00	0.00	11,574.10
21 729 000 6731 920	BASEBALL	979.28	0.00	370.00	0.00	1,349.28
21 729 000 6732 920	SOFTBALL	60.55	0.00	450.00	0.00	510.55
21 729 000 6790 920	WRESTLING	3.44	0.00	0.00	0.00	3.44
21 729 000 6792 920	MISC ATHLETICS	287.90	1,553.18	0.00	2,500.00	1,234.72
21 729 000 6900 920	OFFICIALS	1,390.16	735.00	0.00	0.00	655.16
21 729 000 7010 950	TAG	693.01	0.00	0.00	0.00	693.01
21 729 000 7015 950	STUDENT COUNCIL	2,734.08	1,092.94	2,298.38	0.00	3,939.52
21 729 000 7016 950	MS STUDENT COUNCIL	1,278.53	168.35	168.35	0.00	1,278.53
21 729 000 7017 950	NATIONAL HONOR SOCIETY	10.74	0.00	0.00	0.00	10.74
21 729 000 7020 950	FCCLA	579.56	0.00	0.00	0.00	579.56
21 729 000 7021 950	O-M	59.54	0.00	0.00	0.00	59.54
21 729 000 7025 950	FFA	2,899.31	371.00	1,629.71	0.00	4,158.02
21 729 000 7030 950	PANTHER GREENHOUSE	614.90	0.00	0.00	0.00	614.90
21 729 000 7032 950	PANTHER PRODUCTIONS	122.88	0.00	0.00	0.00	122.88
21 729 000 7039 950	SCIENCE ACTIVITY	3,081.20	0.00	0.00	0.00	3,081.20
21 729 000 7042 950	ART CLUB	814.70	0.00	0.00	0.00	814.70
21 729 000 7043 950	MUSIC CLUB	2,923.97	3,717.50	2,718.20	0.00	1,924.67
21 729 000 7044 950	ROBOTICS CLUB	64.55	0.00	0.00	0.00	64.55
21 729 000 7045 950	YEARBOOK	6,651.23	0.00	200.00	0.00	6,851.23
21 729 000 7050 950	DRILL TEAM	767.03	153.00	252.00	0.00	866.03
21 729 000 7055 950	CHEERLEADERS	1,532.87	382.47	771.66	0.00	1,922.06
21 729 000 7065 950	TECHNOLOGY	1,002.05	0.00	220.00	0.00	1,222.05
21 729 000 7070 950	PANTHERS FOR PREVENTION	694.79	0.00	0.00	0.00	694.79
21 729 000 7085 950	GENERAL	10,777.50	2,974.11	17,110.50	(8,920.00)	15,993.89
21 729 000 7086 950	CLASS OF 2015	3,795.21	0.00	0.00	0.00	3,795.21
21 729 000 7087 950	CLASS OF 2016	72.90	0.00	80.00	0.00	152.90

13

09/2014 - 09/2014

Excluding Zeros; Beginning Month 09/2014; Processing Month 09/2014; Fund Number 21

Fund: 21 ACTIVITY FUND

Chart of Account Number	Chart of Account Description	Beginning Balance	Expenses	Revenues	Balance Change	Balance
	Fund Total: 21	62,542.37	20,690.48	34,846.30	0.00	76,698.19

<u>Vendor Name</u>	<u>PO Number</u>	<u>Invoice</u>	<u>Invoice Date</u>	<u>Amount</u>
<u>Account Number</u>	<u>Description</u>		<u>Amount</u>	
Checking	4	Fund: 40 DEBT SERVICE FUND		
BANKERS TRUST COMPANY		0185363991	09/11/2014	3,765.00
40 0000 5100 100 0000 832	GO BOND 2007 INTEREST		3,515.00	
40 0000 2510 000 0000 349	FEES		250.00	
BANKERS TRUST COMPANY		0185365160	09/11/2014	214,231.25
40 0000 5100 100 0000 832	GO BOND 2008 INTEREST DUE		213,981.25	
40 0000 2510 000 0000 349	FEES		250.00	
BANKERS TRUST COMPANY		0185385705	09/11/2014	4,160.50
40 0000 5100 100 0000 832	GO BOND 2012 INTEREST		3,910.50	
40 0000 2510 000 0000 349	FEES		250.00	
		Vendor Total:		222,156.75
		Fund Total:		222,156.75
		Checking Account Total:		222,156.75

Board Report - For Board

Unposted; Batch Description SAVE OCTOBER INVOICES-0001

<u>Vendor Name</u>	<u>Invoice</u>	<u>Description</u>	<u>Amount</u>	
Checking	4	Fund: 33 CAPITAL PROJECTS FUND		
MIDWEST COMPUTER PRODUCTS INC	703402/44059	TECHNOLOGY EQUIPMENT	19,227.02	
	2			
MIDWEST COMPUTER PRODUCTS INC	703700	TECHNOLOGY EQUIPMENT	1,300.00	
		Vendor Total:		20,527.02
		Fund Total:		20,527.02
		Checking Account Total:		20,527.02

<u>Vendor Name</u>	<u>Invoice</u>	<u>Description</u>	<u>Amount</u>	
Checking	1	Fund: 22 MANAGEMENT FUND		
BRYTON INSURANCE AGENCY	20140916	INSURANCE PREMIUM	563.00	
BRYTON INSURANCE AGENCY	48777	INSURANCE PREMIUM	4,056.00	
		Vendor Total:		4,619.00
		Fund Total:		4,619.00
		Checking Account Total:		4,619.00

17

Board Report - For Board

Unposted; Batch Description PPEL OCTOBER INVOICES-0003

<u>Vendor Name</u>	<u>Invoice</u>	<u>Description</u>	<u>Amount</u>	
Checking	4	Fund: 36 PPEL FUND		
ARGANBRIGHT LAND IMPROVEMENT	1762	PLAYGROUND EQUIPMENT	625.68	
		Vendor Total:		625.68
B-R ATHLETIC FACILITY	2163	NEW BLEACHERS	79,875.00	
		Vendor Total:		79,875.00
BOLAND RECREATION	14126	PLAYGROUND EQUIPMENT	16,425.00	
		Vendor Total:		16,425.00
G.E.M. SERVICES	214096	BUILDING IMPROVEMENTS	2,208.88	
		Vendor Total:		2,208.88
VISA	20141007	GROUNDS IMPROVEMENTS	2,341.40	
		Vendor Total:		2,341.40
		Fund Total:		101,475.96
		Checking Account Total:		101,475.96

18

<u>Vendor Name</u>	<u>Invoice</u>	<u>Description</u>	<u>Amount</u>	
Checking	1	Fund: 10 GENERAL FUND		
ACME TOOLS	2902106	CARL PERKINS EQUIPMENT	2,569.00	
		Vendor Total:		2,569.00
ADVANCED COMPUTER & GRAPHIC SOLUTIONS	7966	COMPUTER SUPPLIES	64.00	
		Vendor Total:		64.00
AIR FILTER SALES & SERVICES	0192409	FILTERS	328.38	
		Vendor Total:		328.38
AMAZON	20140923	INSTRUCTIONAL SUPPLIES	3.59	
AMAZON	20140923-0001	INSTRUCTIONAL SUPPLIES	33.18	
AMAZON	20140923-0002	INSTRUCTIONAL SUPPLIES	14.36	
AMAZON	20140923-0003	INSTRUCTIONAL SUPPLIES	92.04	
AMAZON	20140923-0004	INSTRUCTIONAL SUPPLIES	26.77	
AMAZON	20140923-0005	INSTRUCTIONAL SUPPLIES	10.53	
AMAZON	20140923-0006	INSTRUCTIONAL SUPPLIES	28.88	
AMAZON	20140923-0007	INSTRUCTIONAL SUPPLIES	48.29	
AMAZON	20140923-0008	INSTRUCTIONAL SUPPLIES	18.23	
AMAZON	20140923-0009	INSTRUCTIONAL SUPPLIES	5.68	
AMAZON	20140923-0010	INSTRUCTIONAL SUPPLIES	25.29	
AMAZON	20140923-0011	INSTRUCTIONAL SUPPLIES	9.99	
AMAZON	20140923-0012	INSTRUCTIONAL SUPPLIES	5.20	
AMAZON	20140923-0013	INSTRUCTIONAL SUPPLIES	23.35	
AMAZON	20140923-0014	INSTRUCTIONAL SUPPLIES	5.23	
AMAZON	20140923-0015	INSTRUCTIONAL SUPPLIES	11.07	
AMAZON	20140923-0016	INSTRUCTIONAL SUPPLIES	42.77	
AMAZON	20140923-0017	INSTRUCTIONAL SUPPLIES	43.83	
AMAZON	20140923-0018	INSTRUCTIONAL SUPPLIES	127.93	
AMAZON	20140923-0019	INSTRUCTIONAL SUPPLIES	97.50	
AMAZON	20140923-0020	INSTRUCTIONAL SUPPLIES	3.98	
AMAZON	20140923-0021	INSTRUCTIONAL SUPPLIES	14.94	
		Vendor Total:		692.63
APPLE COMPUTER INC	4297922163	TECHNOLOGY SUPPLIES	98.00	
		Vendor Total:		98.00
ARAMARK UNIFORM SERVICES	637-8487868	CUSTODIAL SUPPLIES	329.63	
ARAMARK UNIFORM SERVICES	637-8487870	CUSTODIAL SUPPLIES	134.94	
ARAMARK UNIFORM SERVICES	637-8504513	CUSTODIAL SUPPLIES	329.63	
ARAMARK UNIFORM SERVICES	637-8504515	CUSTODIAL SUPPLIES	95.48	
		Vendor Total:		889.68

<u>Vendor Name</u>	<u>Invoice</u>	<u>Description</u>	<u>Amount</u>	
ARGANBRIGHT, TINA	20140922	SUPPLY REIMBURSEMENT	31.21	
		Vendor Total:		31.21
ARNOLD MOTOR SUPPLY	82-113858	VOC AG SUPPLIES	369.95	
		Vendor Total:		369.95
ASCD	20141001	MEMBERSHIP FEE	134.00	
		Vendor Total:		134.00
ASSESSMENT SOLUTIONS FOR EDUCATION, INC	764	ASSESSMENT DATA	1,925.00	
		Vendor Total:		1,925.00
AUTO REFINISH SOLUTIONS	82-114170	AG CLASS SUPPLIES	198.88	
		Vendor Total:		198.88
BARNES & NOBLE, INC.	2875239	PLTW INSTRUCTIONAL SUPPLIES	51.92	
		Vendor Total:		51.92
BELLER DISTRIBUTING	PI0001115	TRANSPORTATION SUPPLIES	2,131.64	
BELLER DISTRIBUTING	PI0001124	TRANSPORTATION SUPPLIES	886.68	
		Vendor Total:		3,018.32
BLOCK, AMY	20140922	MEAL REIMBURSEMENT	10.00	
		Vendor Total:		10.00
BROWN & SAENGER	1877796-0	AV SUPPLIES	42.66	
BROWN & SAENGER	1877796-1	AV SUPPLIES	3.55	
		Vendor Total:		46.21
CAPITAL SANITARY SUPPLY CO	20140922	CUSTODIAL SUPPLIES	106.28	
CAPITAL SANITARY SUPPLY CO	C170748	CUSTODIAL SUPPLIES	316.40	
		Vendor Total:		422.68
CENTRAL IOWA DISTRIBUTING INC	112852	CUSTODIAL SUPPLIES	148.80	
		Vendor Total:		148.80
CITY OF PANORA	SEPT 2014/ ELEM	ELECTRIC/WATER/SEWER	4,937.65	
CITY OF PANORA	SEPT 2014/BALL	ELECTRIC/WATER/SEWER	212.94	
CITY OF PANORA	SEPT 2014/BUS	ELECTRIC/WATER/SEWER	1,319.96	
CITY OF PANORA	SEPT 2014/MSHS	ELECTRIC/WATER/SEWER	9,411.22	
		Vendor Total:		15,881.77
CONTINENTAL CLAY CO	INV000090874	ART SUPPLIES	790.66	
CONTINENTAL CLAY CO	INV000090875	ART SUPPLIES	224.00	
		Vendor Total:		1,014.66
CULLIGAN WATER CONDITIONING	20141005	BOTTLE FREE COOLER RENT	78.00	
CULLIGAN WATER CONDITIONING	92279	WATER FILTER SUPPLIES	71.10	
		Vendor Total:		149.10
DELL MARKETING L.P.	XJJR42FJ8	TECHNOLOGY SUPPLIES & EQUIP	247.47	
		Vendor Total:		247.47
DES MOINES REGISTER #1150	20140923	SUBSCRIPTIONS, ADS	48.46	
		Vendor Total:		48.46
DEVELOPMENTAL STUDIES CENTER	86404	INSTRUCTIONAL SUPPLIES	3,008.88	
DEVELOPMENTAL STUDIES CENTER	87231	INSTRUCTIONAL SUPPLIES	1,500.00	
		Vendor Total:		4,508.88
DOWNING, RACHEL	20140924	MEAL REIMBURSEMENT	10.00	
		Vendor Total:		10.00
EBSCO SUBSCRIPTION SERVICES	1480441	SUBSCRIPTIONS	426.14	
		Vendor Total:		426.14
ECHO GROUP INC	S6047071.001	ELECTRICAL SUPPLIES	251.20	
ECHO GROUP INC	S6055784.001	ELECTRICAL SUPPLIES	405.60	
		Vendor Total:		656.80

20

<u>Vendor Name</u>	<u>Invoice</u>	<u>Description</u>	<u>Amount</u>	
ELLIOTT, KATHRYN	20140916	REIMBURSEMENT	80.00	
		Vendor Total:		80.00
FIRST	17179	REGISTRATION/SET UP KITS	450.00	
		Vendor Total:		450.00
FOLLETT SCHOOL SOLUTIONS	483974F-3	LIBRARY SUPPLIES	19.40	
		Vendor Total:		19.40
G.E.M. SERVICES	214101	SERVICE/REPAIRS	393.82	
		Vendor Total:		393.82
GOODHEART-WILLCOX PUBLISHER	01428017	INSTRUCTIONAL SUPPLIES	27.37	
		Vendor Total:		27.37
GRACENOTES LLC	314	MUSIC SUPPLIES	29.99	
		Vendor Total:		29.99
GRAPHIC EDGE, THE	806643	PRINTING/SHIRTS	1,537.56	
GRAPHIC EDGE, THE	815831	PRINTING/SHIRTS	24.63	
		Vendor Total:		1,562.19
GUTHRIE TRANSFER STATION	38879	LANDFILL FEES	19.00	
GUTHRIE TRANSFER STATION	39088	LANDFILL FEES	12.50	
		Vendor Total:		31.50
HEARTLAND CO-OP ELEVATOR	33-540462	GASOLINE & DIESEL	60.47	
		Vendor Total:		60.47
HEARTLAND EDUC AGENCY #11	107501	MISC SUPPLIES	1.60	
HEARTLAND EDUC AGENCY #11	108562	MISC SUPPLIES	190.50	
		Vendor Total:		192.10
HIGHWAY 44 ENTERPRISES, LLC	2724	TRANSPORTATION PURCHASED SERVICE	440.00	
		Vendor Total:		440.00
HILLYARD/DM SANITARY SUPPLY	20140922	CUSTODIAL SUPPLIES CREDIT	(101.00)	
HILLYARD/DM SANITARY SUPPLY	601294482	CUSTODIAL SUPPLIES	118.63	
HILLYARD/DM SANITARY SUPPLY	601303879	CUSTODIAL SUPPLIES	114.92	
		Vendor Total:		132.55
IOWA ASSOC FOR EDUCATION OF YOUNG CHILDR,	20140922	PROFESSIONAL DEVELOPMENT	560.00	
		Vendor Total:		560.00
IOWA ASSOC OF SCHOOL BOARDS	IASB0010112	MISC FEES	34.00	
IOWA ASSOC OF SCHOOL BOARDS	IDATP000000017	IDATP RECERTIFICATION	175.00	
		Vendor Total:		209.00
ITEC	384467	TECHNOLOGY PD	175.00	
		Vendor Total:		175.00
J ROBERT HOPSON INC	20141001	ACTUARY SERVICES	900.00	
		Vendor Total:		900.00
J. SCHON CONSTRUCTION	20140922	MAINTENANCE/REPAIR SERVICES	1,164.92	
		Vendor Total:		1,164.92
J. W. PEPPER & SON, INC.	11A09285-2	BAND & MUSIC SUPPLIES	8.99	
J. W. PEPPER & SON, INC.	11a14702	MARCHING BAND SUPPLIES	60.99	
		Vendor Total:		69.98
JENSEN SANITATION, LLC	1690	GARBAGE COLLECTION	344.00	
JENSEN SANITATION, LLC	23299	GARBAGE COLLECTION	457.50	
		Vendor Total:		801.50
KRUCK PLUMBING & HEATING CO	53689	HVAC REPAIR SERVICES	481.90	
KRUCK PLUMBING & HEATING CO	53715	HVAC REPAIR SERVICES	228.90	
		Vendor Total:		710.80
LAKE LUMBER	119964	MISC SUPPLIES	(59.70)	
LAKE LUMBER	854850	MISC SUPPLIES	67.20	

21

<u>Vendor Name</u>	<u>Invoice</u>	<u>Description</u>	<u>Amount</u>	
LAKE LUMBER	863430	MISC SUPPLIES	17.16	
LAKE LUMBER	865564	MISC SUPPLIES	89.99	
		Vendor Total:		114.65
MARTIN BROTHERS DISTRIBUTING COMPANY	5343993	CUSTODIAL SUPPLIES	385.64	
MARTIN BROTHERS DISTRIBUTING COMPANY	5353821	CUSTODIAL SUPPLIES	341.01	
		Vendor Total:		726.65
MEDICAL ENTERPRISES INC	20140922	NURSE SUPPLIES	36.00	
		Vendor Total:		36.00
MERCY CLINICS INC	20141001	PHYS/WORK COMP	100.00	
		Vendor Total:		100.00
MICROBIOLOGY CLUB WORKSHOP	20141006	STUDENT WORKSHOP	30.00	
		Vendor Total:		30.00
MIDAMERICAN ENERGY	090140914	MONTHLY NATURAL GAS CHARGES	202.00	
MIDAMERICAN ENERGY	200060914	MONTHLY NATURAL GAS CHARGES	10.00	
MIDAMERICAN ENERGY	250290914	MONTHLY NATURAL GAS CHARGES	482.36	
		Vendor Total:		694.36
MIDWEST COMPUTER PRODUCTS INC	704165	COMPUTER SUPPLIES	141.18	
		Vendor Total:		141.18
NUNN, KELLY	20140922	MEAL REIMBURSEMENT	10.00	
		Vendor Total:		10.00
O'HALLORAN INTERNATIONAL, INC.	R102013126: 01	VEHICLE REPAIR SERVICES	5,442.86	
O'HALLORAN INTERNATIONAL, INC.	R102013181: 01	VEHICLE REPAIR SERVICES	451.89	
O'HALLORAN INTERNATIONAL, INC.	R102013184: 01	VEHICLE REPAIR SERVICES	112.41	
O'HALLORAN INTERNATIONAL, INC.	R102013185: 01	VEHICLE REPAIR SERVICES	396.33	
		Vendor Total:		6,403.49
ODYSSEYWARE	02482295	LICENSE RENEWAL	4,975.00	
		Vendor Total:		4,975.00
PANORA AUTO PARTS	285497	VEHICLE REPAIR PARTS	114.50	
PANORA AUTO PARTS	285804	BUS SHOP SUPPLIES	76.93	
PANORA AUTO PARTS	285805	MAINTENANCE REPAIR PARTS	258.60	
		Vendor Total:		450.03
PANORA TELCO	20141001	TELEPHONES	733.46	
		Vendor Total:		733.46
PANORAMA NUTITION FUND, PANORAMA CATERING	140909	CATERING SERVICES	8.64	
PANORAMA NUTITION FUND, PANORAMA CATERING	141909	CATERING SERVICES	43.20	
PANORAMA NUTITION FUND, PANORAMA CATERING	20140923	BOOKS REFUND	24.75	
PANORAMA NUTITION FUND, PANORAMA CATERING	20141005	AUGUST 2014	126.30	
		Vendor Total:		202.89
PITNEY BOWES GLOBAL FINANCIAL SERVICES LLC	1480525-au14	POSTAGE METER RENTAL	200.04	
		Vendor Total:		200.04
PITSCO EDUCATION	582505-1	INDUSTRIAL TECH SUPPLIES	333.61	
		Vendor Total:		333.61
POPPLERS MUSIC STORE	1753290	MUSIC SUPPLIES	109.90	
		Vendor Total:		109.90
PRESTO-X	30442251	PEST CONTROL	79.57	
		Vendor Total:		79.57

<u>Vendor Name</u>	<u>Invoice</u>	<u>Description</u>	<u>Amount</u>	
QUAVERMUSIC.COM, LLC	5522	INSTRUCTIONAL MATERIALS	6,500.00	
		Vendor Total:		6,500.00
QUILL CORPORATION	5962910	OFFICE/MISC SUPPLIES	37.53	
		Vendor Total:		37.53
REALLY GOOD STUFF	4940746	ELEM SUPPLIES	110.90	
		Vendor Total:		110.90
RIEMAN MUSIC	1984810	BAND SUPPLIES	35.00	
RIEMAN MUSIC	1987811	BAND SUPPLIES	17.85	
RIEMAN MUSIC	1993526	BAND SUPPLIES	75.20	
RIEMAN MUSIC	1998864	BAND SUPPLIES	45.00	
RIEMAN MUSIC	2001009	BAND SUPPLIES	6.26	
		Vendor Total:		179.31
SCHOOL BUS SALES	IN05602	BUS REPAIR PARTS	29.20	
		Vendor Total:		29.20
SCHOOL OUTFITTERS	R102013126: 01	INSTRUCTIONAL SUPPLIES	156.86	
		Vendor Total:		156.86
SIEMENS INDUSTRY, INC.	5443402798	MAINTENANCE/SUPPORT	825.00	
		Vendor Total:		825.00
SIMPLEX GRINNELL LP	80593752	FIRE ALARM MAINTENANCE/REPAIR	601.05	
		Vendor Total:		601.05
SKILL PATH SEMINARS	10797497	PHOTOSHOP WORKSHOP	149.00	
		Vendor Total:		149.00
STAR ENERGY LLC	10516	TRANSPORTATION SUPPLIES	618.95	
		Vendor Total:		618.95
STRAUSS LOCK CO	896267-000	LOCKS, SUPPLIES	503.06	
		Vendor Total:		503.06
THOMAS BUS SALES OF IOWA	118997	VEHICLE REPAIR PARTS	18.75	
		Vendor Total:		18.75
US GAMES/SPORT SUPPLY GROUP	96379741	PE SUPPLIES	287.84	
		Vendor Total:		287.84
VEDETTE, THE	20141001	ADS & PUBLICATIONS	337.73	
		Vendor Total:		337.73
VISA	20141006	MISC SUPPLIES & EQUIP	15.00	
VISA	20141006- 0001	MISC SUPPLIES & EQUIP	15.00	
VISA	20141006- 0003	TECHNOLOGY SUPPLIES	23.36	
VISA	20141006- 0004	TECHNOLOGY SUPPLIES	74.95	
VISA	20141006- 0005	SPED INSTRUCTIONAL SUPPLIES	67.50	
VISA	20141006- 0006	TECHNOLOGY SUPPLIES	26.97	
VISA	20141006- 0007	TRANSPORTATION SUPPLIES	74.12	
VISA	20141006- 0008	TRANSPORTATION SUPPLIES	109.00	
VISA	20141006- 0009	T/G LEGO KITS	83.00	
		Vendor Total:		488.90
WEIDENTHALER, JULIE	20141001	MEAL REIMBURSEMENT	10.00	
		Vendor Total:		10.00
WESTOWN ADVERTISING MEDIA, INC.	1414	PARKING LOT TAGS	387.00	
		Vendor Total:		387.00

23

<u>Vendor Name</u>	<u>Invoice</u>	<u>Description</u>	<u>Amount</u>
--------------------	----------------	--------------------	---------------

Fund Total:	68,534.44
Checking Account Total:	68,534.44

24

Panorama CSD
09/15/2014 3:45 PM

Board Report - For Board
Unposted; Batch Description SEPTEMBER AFTER BOARD

Page: 1
User ID: VRP

<u>Vendor Name</u>	<u>Invoice</u>	<u>Description</u>	<u>Amount</u>	
Checking	1	Fund: 10 GENERAL FUND		
AIR FILTER SALES & SERVICES	0187955	FILTERS SHIPPING	52.10	
		Vendor Total:		52.10
ELLIOTT, KATHRYN	20140915	REIMBURSEMENT	80.00	
		Vendor Total:		80.00
INTERSTATE POWER SYSTEMS	R012041354: 01-1	TRANSPORTATION MAINTENANCE SERVICE	298.96	
		Vendor Total:		298.96
IOWA TALENTED AND GIFTED ASSOCIATION	336928521	CONFERENCE REGISTRATION	285.00	
		Vendor Total:		285.00
VERIZON WIRELESS	20140915	CELLULAR PHONES	95.64	
		Vendor Total:		95.64
		Fund Total:		811.70
		Checking Account Total:		811.70

Panorama CSD
09/16/2014 1:07 PM

Board Report - For Board
Unposted; Batch Description STAR ENERGY INVOICE-0001

Page: 1
User ID: VRP

<u>Vendor Name</u>	<u>Invoice</u>	<u>Description</u>	<u>Amount</u>	
Checking	1	Fund: 10 GENERAL FUND		
STAR ENERGY LLC	20140916	GASOLINE & DIESEL	2,944.15	
		Vendor Total:		2,944.15
		Fund Total:		2,944.15
		Checking Account Total:		2,944.15

Panorama CSD
09/22/2014 10:37 AM

Board Report - For Board
Unposted; Batch Description FIELD TRIP-0003

Page: 1
User ID: VRP

<u>Vendor Name</u>	<u>Invoice</u>	<u>Description</u>	<u>Amount</u>	
Checking	1	Fund: 10 GENERAL FUND		
ICSS	20140922	DUES & FEES	110.00	
		Vendor Total:		110.00
IOWA MARKET	20140922	FIELD TRIP MEAL	297.00	
		Vendor Total:		297.00
SPRINGBROOK CONSERVATION EDUCATION CENTE	20140922	MS SCIENCE FIELD TRIP	300.00	
		Vendor Total:		300.00
		Fund Total:		707.00
		Checking Account Total:		707.00

Panorama CSD
09/30/2014 11:29 AM

Board Report - For Board
Unposted; Batch Description KINDERGARTEN FIELD TRIP

Page: 1
User ID: VRP

<u>Vendor Name</u>	<u>Invoice</u>	<u>Description</u>	<u>Amount</u>	
Checking	1	Fund: 10 GENERAL FUND		
DEAL'S ORCHARD	20140930	FIELD TRIP	150.00	
		Vendor Total:		150.00
		Fund Total:		150.00
		Checking Account Total:		150.00

25

Employee Official Payments

Name	Date	Event	Amount
Wharton, Shawn	9/22/2014	JV Football	\$80.00

**October 2014 VISA Statement
Board Financial Report**

Vendor	Purchase	Amount	Fund
IA DEPT PUB SAFETY	Employee Background Checks	\$15.00	General
IA DEPT PUB SAFETY	Employee Background Checks	\$15.00	General
Lego Education	Field Set Up Kits	\$83.00	General
Mulch Mart	Playground Mulch	\$2,341.40	General
B&H Photo	Flip Video Battery Pack	\$23.36	General
Acoustica.com	Mixcraft 6 License for Music Classroom	\$74.95	General
Century Theatres	"The Giver" Movie Tickets Special Ed Class	\$67.50	General
Newegg.com	Maximal Power Flip Replacement Battery	\$26.97	General
Midwest Wheel	Oil Wheel Seals	\$217.67	General
Midwest Wheel	Oil Wheel Seals Credit	-\$143.55	General
Axis Products	Brake Controller	\$585.48	General
Axis Products	Brake Controller Credit	-\$476.48	General
Total		\$2,830.30	

September 2014 Bank Reconciliation

Farmer's State Bank

Capital Projects

Bank Balance

Statement Balance 9/28/2014	\$1,178,853.61
<i>Outstanding Checks</i>	\$0.00

Total Bank Balance \$1,178,853.61

School Books

Debt Service Balance	\$139,929.35
PPEL Balance	\$70,289.45
SAVE Balance	\$968,634.81

Total Balance on School Books \$1,178,853.61

Panora State Bank

General/Management

Bank Balance

Statement Balance 9/30/2014	\$1,960,856.01
<i>Outstanding Checks</i>	\$2,217.95
<i>Deposit in Transit</i>	\$17,907.14

Total Bank Balance \$1,976,545.20

School Books

General Balance	\$1,901,024.17
Management	\$75,521.03

Total Balance on School Books \$1,976,545.20

Activity

Bank Balance

Statement Balance 9/30/2014	\$66,905.00
<i>Deposit in Transit</i>	\$0.00
<i>Outstanding Checks</i>	\$201.00

Total Bank Balance \$66,704.00

School Books

Activity Balance	\$66,704.00
------------------	-------------

Total Balance on School Books \$66,704.00

Guthrie County State Bank

Nutrition

Bank Balance

Statement Balance 9/30/2014	\$95,939.63
<i>Deposit in Transit</i>	\$1,264.85
<i>Outstanding Checks</i>	\$16.60

Total Bank Balance \$97,187.88

School Books

Nutrition Balance	\$97,187.88
-------------------	-------------

Total Balance on School Books \$97,187.88



Expenditures/Expenses to Certified Budget Comparison
Through September 2014

Instruction	General	Management	PPEL	Capital Projects
Regular Program Instruction (1100)				
<i>Expenditures to Date</i>	\$360,553.50	\$75,648.00		\$123,277.80
<i>Budgeted Amount (Line Item)</i>	\$3,773,428.00	\$170,000.00		\$140,000.00
<i>Amount Remaining</i>	\$3,412,874.50	\$94,352.00		\$16,722.20
<i>Percentage of Budget Spent</i>	9.56%	44.50%		88.06%
Special Program Instruction (1200)				
<i>Expenditures to Date</i>	\$85,691.28			
<i>Budgeted Amount (Line Item)</i>	\$921,333.00			
<i>Amount Remaining</i>	\$835,641.72			
<i>Percentage of Budget Spent</i>	9.30%			
Vocational Program Instruction (1300)				
<i>Expenditures to Date</i>	\$16,349.58			
<i>Budgeted Amount (Line Item)</i>	\$178,077.00			
<i>Amount Remaining</i>	\$161,727.42			
<i>Percentage of Budget Spent</i>	9.18%			
Co-Curricular Program Instruction (1400)				
<i>Expenditures to Date</i>	\$18,779.74			
<i>Budgeted Amount (Line Item)</i>	\$195,495.00			
<i>Amount Remaining</i>	\$176,715.26			
<i>Percentage of Budget Spent</i>	9.61%			

TOTAL INSTRUCTION				
<i>Expenditures to Date</i>	\$481,374.10	\$75,648.00		\$123,277.80
<i>Budgeted Amount (Line Item)</i>	\$5,068,333.00	\$170,000.00		\$140,000.00
<i>Amount Remaining</i>	\$4,586,958.90	\$94,352.00		\$16,722.20
<i>Percentage of Budget Spent</i>	9.50%	44.50%		88.06%

TOTAL INSTRUCTION (ALL FUNDS COMBINED)	FY14 to date	FY13 to date	FY12 to date
<i>Expenditures to Date</i>	\$680,299.90	\$567,860.80	\$556,346.97
<i>Budgeted Amount (Line Item)</i>	\$5,378,333.00	\$4,962,841.00	\$4,998,612.00
<i>Amount Remaining</i>	\$4,698,033.10	\$4,394,980.20	\$4,442,265.03
<i>Percentage of Budget Spent</i>	12.65%	11.44%	11.13%

CERTIFIED BUDGET (INSTRUCTION)	
<i>Expenditures to Date</i>	\$680,299.90
<i>Budgeted Amount</i>	\$5,726,040.00
<i>Amount Remaining</i>	\$5,045,740.10
<i>Percentage of Budget Spent</i>	11.88%

Support Services

General Management PPEL Capital Projects

Guidance/Nurse (21XX)

Expenditures to Date	\$21,506.14			
Budgeted Amount (Line Item)	\$211,648.00			
Amount Remaining	\$190,141.86			
Percentage of Budget Spent	10.16%			

Curriculum Director/Library/Technology (22XX)

Expenditures to Date	\$72,144.64		\$10,420.62	\$199,959.50
Budgeted Amount (Line Item)	\$336,474.00		\$28,000.00	\$262,000.00
Amount Remaining	\$264,329.36		\$17,579.38	\$62,040.50
Percentage of Budget Spent	21.44%		37.22%	76.32%

Administration/Fiscal Services (23XX-25XX)

Expenditures to Date	\$165,154.05			
Budgeted Amount (Line Item)	\$799,633.00			
Amount Remaining	\$634,478.95			
Percentage of Budget Spent	20.65%			

Plant Operation & Maintenance (26XX)

Expenditures to Date	\$113,334.98	\$70,557.00	\$4,362.00	
Budgeted Amount (Line Item)	\$576,270.00	\$95,000.00	\$10,000.00	
Amount Remaining	\$462,935.02	\$24,443.00	\$5,638.00	
Percentage of Budget Spent	19.67%	74.27%	43.62%	

Transportation (27XX)

Expenditures to Date	\$81,531.43	\$15,624.00	\$82,955.00	
Budgeted Amount (Line Item)	\$484,329.00	\$17,500.00	\$83,000.00	
Amount Remaining	\$402,797.57	\$1,876.00	\$45.00	
Percentage of Budget Spent	16.83%	89.28%	99.95%	

TOTAL SUPPORT SERVICES

Expenditures to Date	\$453,671.24	\$86,181.00	\$97,737.62	\$199,959.50
Budgeted Amount (Line Item)	\$2,408,354.00	\$112,500.00	\$121,000.00	\$262,000.00
Amount Remaining	\$1,954,682.76	\$26,319.00	\$23,262.38	\$62,040.50
Percentage of Budget Spent	18.84%	76.61%	80.77%	76.32%

TOTAL SUPPORT (ALL FUNDS COMBINED)

		FY14 to date	FY13 to date	FY12 to date
Expenditures to Date	\$837,549.36	\$662,259.56	\$697,067.30	\$623,184.96
Budgeted Amount (Line Item)	\$2,903,854.00	\$2,224,232.00	\$2,647,455.00	\$2,631,585.00
Amount Remaining	\$2,066,304.64	\$1,561,972.44	\$1,950,387.70	\$2,008,400.04
Percentage of Budget Spent	28.84%	29.77%	26.33%	23.68%

CERTIFIED BUDGET (SUPPORT SERVICES)

Expenditures to Date	\$837,549.36
Budgeted Amount	\$2,991,572.00
Amount Remaining	\$2,154,022.64
Percentage of Budget Spent	28.00%

Nutrition (3XXX)

Nutrition (3XXX)

Expenditures to Date	\$21,304.73
Budgeted Amount (Line Item)	\$430,995.00
Amount Remaining	\$409,690.27
Percentage of Budget Spent	4.94%

TOTAL NON-INSTRUCTION		FY14 to date	FY13 to date	FY12 to date
Expenditures to Date	\$21,304.73	\$26,307.83	\$25,782.59	\$19,813.07
Budgeted Amount (Line Item)	\$430,995.00	\$411,810.00	\$443,900.00	\$424,950.00
Amount Remaining	\$409,690.27	\$385,502.17	\$418,117.41	\$405,136.93
Percentage of Budget Spent	4.94%	6.39%	5.81%	4.66%

CERTIFIED BUDGET (NON-INSTRUCTION)

Expenditures to Date	\$21,304.73
Budgeted Amount (Certified)	\$450,000.00
Amount Remaining	\$428,695.27
Percentage of Budget Spent	4.73%

Activity

Activity

<i>Expenditures to Date</i>	\$39,063.43
<i>Budgeted Amount (Line Item)</i>	\$268,400.00
<i>Amount Remaining</i>	\$229,336.57
<i>Percentage of Budget Spent</i>	14.55%

TOTAL NON-INSTRUCTION	FY14 to date	FY13 to date	FY12 to date
<i>Expenditures to Date</i>	\$39,063.43	\$38,928.76	\$49,003.55
<i>Budgeted Amount (Line Item)</i>	\$411,810.00	n/a	n/a
<i>Amount Remaining</i>	\$229,336.57	n/a	n/a
<i>Percentage of Budget Spent</i>	14.55%	n/a	n/a

October 13th, 2014 Board Meeting
Open Enrollment Applications

2014-15 School Year

Open Enrollment **OUT**

Student Name	Grade	Parents	District Requested	Reason
Brumbaugh, Nipentha		Tamy Brumbaugh	Des Moines Public	Other
Brehm, Alexandra	10	Roger & Karen Bradley	SE Polk (Home School Assistance Program)	Family Move
Bradley, Michayla	K	Roger & Karen Bradley	SE Polk (Home School Assistance Program)	Family Move
Hammerstrom, Zander	2	Chris & Sarah Hammerstrom	Carlisle	Family Move
Hammerstrom, Elijah	2	Chris & Sarah Hammerstrom	Carlisle	Family Move
Hammerstrom, Maddox	3	Chris & Sarah Hammerstrom	Carlisle	Family Move

2014-15 School Year

Open Enrollment **IN**

Student Name	Grade	Parents	Resident District	Reason
Heckman, Blake	K	Travis Heckman	Guthrie Center	New OE Application

***Elementary Principal/School Improvement Coordinator Report
Submitted by Mary Breyfogle
October 13, 2014***

➤ Literacy

- Trainers were here last week
- Shared that we are in a very good place with implementation
- Teachers appreciated the support and got many questions answered
- Students are reading and writing more than ever before
- Programs also include a social skills component teaching children how to collaborate and communicate with each other

➤ Bullying Prevention Month

- PBIS team has helped to plan activities for the month
- Basically one activity or theme each week
 - Stomp Out Bullying balloon launch
 - Class banners
 - Virtual Bullying Prevention Walk
 - Be a Friend
- Purpose is to raise awareness of what bullying is and how students should respond

➤ Early Literacy

- Continue to get clarification from the state on policy and guidelines
- Winter testing is the first testing period where students could be considered substantially deficient
- Information will be shared with parents before and at conferences through a variety of formats (email, note home, people available to answer questions)

Middle/High School Board Report
October 13, 2014

1. Multi-Tiered System of Supports (MTSS). This committee formerly known as Instructional Decision Making (IDM) and then Response to Intervention (RTI) is now MTSS. The team is made of Dan Breyfogle, Randy Miller, Julie Weidenthaler, Greg Thompson, Brian Bahrenfuss and I. Our previous goals have been centered on literacy. This year we are looking at how to continue to perform at high levels in regards to literacy and what supports need to be put into place to support math instruction.

The team has reviewed fall MAP data and has decided to support three goals. The first is to continue to support the literacy program in the middle school. The second is to work with high school staff to include literacy learning opportunities within the regular classroom. The third is to establish tutoring opportunities for students struggling in math. Tutoring is now available 4th, 5th, and 6th blocks.

2. Certified and Non-certified Staff Evaluations. I will be evaluating 18 certified staff members this year along with 12 non-certified. Certified staff members will have a pre-observation meeting, observation, post-observation meeting, and a performance review. Conversations and observations are set around Individual Professional Development Plans that are tied to building and district goals. With the large number of evaluations, I began meeting and observing teachers last month. I will need to observe new teachers three times formally, all have been observed once.
3. Staff Meetings. We meet every other Friday from 7:30 to 8:00. Each meeting consists of discussing an article that was made available the week before the meeting. We are currently studying student motivation and engagement. I model a learning strategy to go with each article. Either I or someone else on staff shares an application, program, or technology innovation that could be incorporated into the classroom. We reserve the last 10 minutes to sit in grade-alike groups to discuss students who might be struggling and how to get them the supports they need. It is a very productive 30 minutes.

Mark Johnston

Enrollment October 1, 2014
(Preliminary Data)

Grade	TOTAL (13-14)	TOTAL (14-15)	+/- by Grade	=/- by cohort
Pre-school (3 year olds)	16.0	20.0	4.0	
Pre-school (4 year olds)	35.0	40.0	5.0	N/A
PK IEP Students	2.0	3.0	1.0	
Transition K (5 year olds)	5.0	2.0	-3.0	
Kindergarten	45.0	50.0	5.0	-14.2 12 to K
1st grade	35.0	41.0	6.0	-4.0 K to 1
2nd grade	54.0	37.0	-17.0	2.0 1 to 2
3rd grade	55.0	52.0	-3.0	-2.0 2 to 3
4th grade	61.0	53.0	-8.0	-2.0 3 to 4
5th grade	62.0	65.0	3.0	4.0 4 to 5
Total Elementary K-5	319.0	303.0	-16.0	-2.0 (1 to 5)
6th grade	51.0	64.1	13.1	2.1 5 to 6
7th grade	54.1	51.1	-3.0	0.1 6 to 7
8th grade	56.3	56.1	-0.2	2.0 7 to 8
Total MS (6-8)	161.4	171.3	9.9	4.2 (6 to 8)
9th grade	52.1	56.3	4.2	0.0 8 to 9
10th grade	68.0	54.1	-13.9	2.0 9 to 10
11th grade	56.0	68.0	12.0	0.0 10 to 11
12th grade	64.2	54.0	-10.2	-2.0 11 to 12
Total HS (9-12)	240.3	232.4	-7.9	0 (9 to 12)
CPI Dual Enrolled	0.3		-0.3	
TOTAL K-12 BEDS	721.0	706.7	-14.3	

BEDS Enrollment	TOTAL (13-14)	TOTAL (14-15)	+/- Change
Resident Students In District	668.0	657.0	-11.0
Resident CPI Dual Enroll (.1)	0.7	0.7	0.0
Open Enroll In	52.0	49.0	-3.0
CPI Dual Enrolled HS Credit	0.3	0.0	-0.3
Tuition In	0.0	0.0	0.0
TOTAL Served In Dist (BEDS)	721.0	706.7	-14.3

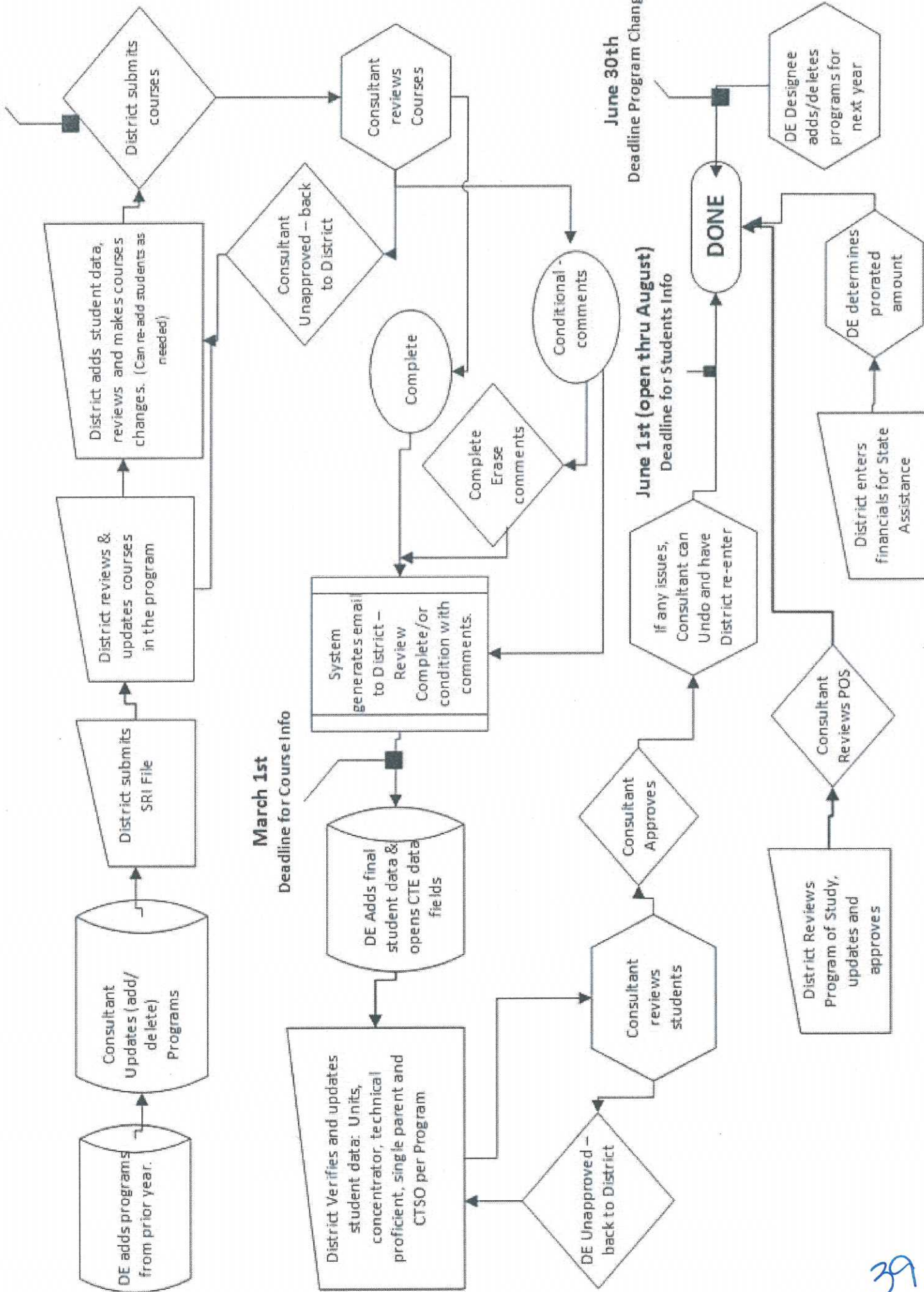
Certified Enrollment	TOTAL (13-14)	TOTAL (14-15)	+/- Change
Resident Students In District	669.0	657.0	-12.0
Resident CPI Dual Enroll (.1)	0.7	0.7	0.0
Open Enroll Out	59.0	57.0	-2.0
Open Enroll Out HS Dual Enro	0.1	1.2	1.1
CPI Dual Enrolled HS Credit	0.3	0.0	-0.3
Tuition Out	0.0	1.0	1.0
TOTAL Certified Budget	729.1	716.9	-12.2

Athletic Complex Project Approval Timeline

October 6	<i>Board Work Session: Information from SVPA Architects</i>
October 13	<i>Board Meeting: Decision on Locker Room Renovation Approve Architects for Project</i>
October 30	<i>Financial Meeting with Piper Jaffray – Sarah and Kathy</i>
November 10	<i>Board Meeting: Information on Financing Options; Use of PPEL/SAVE</i>
November 12	Information in local papers and on website
November 21	Newsletter article
December 1 (tentative)	<i>Informational Meeting with public to answer questions and gather input</i>
December 8	<i>Board Meeting: Decision on Athletic Complex Project</i>

SECONDARY CAREER & TECHNICAL EDUCATION PROCESS

February 1st
Completed



Proposed Career and Technical Education Coordinator

The Career and Technical Education Coordinator would be a member of the CTE teaching team consisting of Agriculture, Food Science, Industrial Technology, and Business. The coordinator would work with the principal to meet state and federal requirements. Responsibilities would include:

- Work with DMACC to develop and monitor implementation of Programs of Study and competencies assessments
- Work with DMACC to align secondary and post-secondary courses to maximize students' entrance into chosen careers
- Work with DMACC to provide students concurrent high school and college credit
- Communicate and monitor compliance requirements with all teachers in the CTE department
- Report and update course sequences and student concentrators/completers to Iowa DE
- Report student proficiency results on competencies assessments to Iowa DE
- Monitor appropriate expenditures of Carl Perkins federal funding
- Organize CTE advisory council and facilitate after-school meetings for industry members to give feedback and direction to CTE programs and meet federal compliance requirements
- Prepare documents and reports needed for DE site visits
- Organize and facilitate regular district CTE teacher meetings

mess. 8-26
Para

2014-2015

Iowa Girls' High School Athletic Union

2013-2014 Application For Whole Grade or Cooperative Sharing Agreement

If your school district is involved or intends to be involved in a cooperative or whole grade sharing agreement for the 2013-2014 academic year, please complete the form below and return it to the State Office. This form must be returned NO LATER THAN APRIL 30, 2013. You may fax the form below to 515-284-1969 or mail to: Iowa Girls' High School Athletic Union, P.O. Box 10348, Des Moines, Iowa 50306.

Participating Schools

Perry (Host School) and Panorama

Name of team as it should appear on tournament pairings Perry

Circle the competitions in which this agreement applies.

Cross Country

Volleyball

Swimming & Diving

Basketball

Bowling

Track & Field

Golf

Tennis

Soccer

Softball

If this is a renewal of an existing agreement, please indicate by checking the box below.

Erin Ambrose
641-755-308F

SIGNATURES REQUIRED:

Superintendent: M. Lynn Han School: Perry CSD

School Board President: Don Wilkins School: Perry CSD

Superintendent: _____ * School: Panorama

School Board President: _____ * School: Panorama

Superintendent: _____ School: _____

School Board President: _____ School: _____

NEED
11/10/14

For Office Use Only: This request is hereby approved by management of the Athletic Union.

Signed by Lisa Brinkmeyer, Assistant Director _____ Date: _____

41



Iowa Department of Education



Year: CURRENT Form: View Reports

District: 5121 School: 0000 Name: Panorama Comm School District

CAR - 2014 Upload and Reports

2014

FY 2014 - Treasurer Report by Fund

Repeat Column Headings Every Lines GO	General Fund	Student Activity Fund	Management Levy Fund	Entrepreneurial Education Fund	PERL Fund	AEA Sp Ed Inst Fund	AEA JH Inst Fund	Support Trust Fund	Disaster Recovery Fund	Library Levy Fund	Local Option / Statewide Services Tax Fund	PPEL Fund	Other Capital Project Funds	Debt Service Fund	Permanent Funds	Enterprise Funds	Internal Service Funds	Trust Funds
1. Beginning Balance	1,439,609.27	55,693.45	187,765.93								970,777.10	247,228.29		15,068.25		8,521.40		146,457.39
2. Adjustments to Beginning Balance	-0.00	-0.00	0.00	0.00	0.00	0.00	0.00	0.00	0.00	0.00	-0.00	0.00	0.00	0.00	0.00	-0.00	0.00	-0.00
3. Revenues and other Financing Sources	7,844,500.86	290,688.28	246,551.98								661,513.80	413,458.49		985,272.60		488,547.78		73.64
4. Total Sources Available	9,284,110.13	346,381.73	434,317.91								1,632,290.90	660,686.78		1,000,340.85		497,069.18		146,531.03
5. Expenditures and Other Financing Uses	7,361,632.01	308,381.12	228,331.94								317,574.95	490,006.12		987,366.00		439,947.64		
6. Ending Balance	1,922,478.12	38,000.61	205,985.97								1,314,715.95	170,680.66		12,974.85		57,121.54		146,531.03

Please contact Janice Evans by email or phone (515)281-4740
Please contact Denise Ragias by email or phone (515)281-4741

42

2013-2014 Screen 11 - Certification

Help

By selecting the "Certify" button below, I, the superintendent or chief administrator, certify the data reported on this Special Education Supplement is true and accurate to the best of my knowledge and belief.

Certify

A district may request allowable growth and supplemental aid for a negative special education balance for the current school year. The supplemental aid payment will be calculated by the Department of Management after all special education balances have been finalized. If a district has a positive special education balance, they do not have the ability to request allowable growth and supplemental aid. The date listed below indicates when the district's board approved seeking allowable growth and supplemental aid for a negative special education balance.

Our Board approved this action on 10/13/2014

Upload your minutes (PDF or Word): Choose File No file chosen

Upload Minutes

Previous Year Carryover (Screen 4)	Weighted Receipts (Screen 4)
\$0.00	\$431,591.00
Total Special Education Revenue	Carryover Allowed in Current Year (10% of Weighted Receipts)
\$1,042,832.69	\$43,159.10
Total Special Education Expenditures	Amount to be Redistributed to Districts with a Negative Balance
\$1,262,617.89	\$0.00
Special Education Balance in Current Year	Amount of Allowable Growth Request
(\$219,785.20)	\$219,785.20

DISTRICT LEVEL FORMS	STATUS	DATE
Screen 1 - Resident Students Tuitioned Out	COMPLETE	9/12/2014 9:09:00 AM
Screen 2 - Resident Students	COMPLETE	9/12/2014 9:13:24 AM
Screen 3 - Non-Resident Students Tuitioned In	COMPLETE	9/12/2014 9:14:51 AM
Screen 4 - Receipts	COMPLETE	9/12/2014 9:14:54 AM
Screen 5 - Part B Funds	COMPLETE	9/12/2014 9:15:07 AM
Screen 6 - Medicaid Reimbursement	COMPLETE	9/12/2014 9:15:55 AM
Screen 7 - Transportation Costs	COMPLETE	9/12/2014 9:16:19 AM
Screen 8 - Special Education Balance	COMPLETE	9/12/2014 9:17:11 AM

43

Backup Server

PowerVault MD3820i - \$16,561.38

- 25 TB of space
- Redundant power supplies
- 3 years of hardware and software warranty
- 3 years of ProSupport Plus
 - Dell will send replacement parts next day if we can fix it
 - Dell will send a technician next day if we can't
 - 24/7 Phone Support
 - Bypasses all lower level tiers of support (saves hours on the phone)
 - Available nights and weekends, don't have to wait until normal business hours
- Will be housed at elementary building
- In the event of a disaster at one of the buildings, servers can be brought back online in a matter of hours

SVPA

Architects Inc.

PROJECT: 13077 **PANORAMA CSD FACILITY IMPROVEMENTS REVIEW**

DATE: **October 6, 2014**

RE: **Architectural & Engineering Proposal for Locker Room Remodel**

Kathy Elliott, Superintendent
Panorama Community School District
701 West Main Street
Panorama , IA 50216

Dear Kathy:

On behalf of SVPA Architects Inc., I want to thank you for the opportunity to continue with facility improvement planning services for the Panorama Community School District. This proposal is for complete Basic Services for a major remodeling of four existing athletic locker rooms and their associated support spaces. SVPA has toured the existing locker rooms, obtained original Construction Documents of the subject area, and has provided some preliminary studies on how these locker rooms could be renovated.

Project Description:

Based on these preliminary studies we anticipate the scope of work to include:

- Replacement of all plumbing fixtures
- Reconfiguration of shower areas to provide for individual stalls
- Enhancement of toilet areas to improve ADA accessibility
- All new athletic lockers
- Reconfiguration of walls and doors to accommodate revised floor plan
- New floor finishes, painting and ceramic tile
- Mechanical/HVAC improvements
- Address water pressure/mixing valve issues
- Update lighting
- Update office, coach's and training areas

Project Budget:

Based on the preliminary studies we anticipate a Total Construction Cost of approximately \$690,000 and a Total Project cost of approximately \$788,000

Scope of Services:

SVPA Architects Inc. shall provide complete basic services including: Schematic Design, Design Development, Construction Documents, Bidding and Negotiation, and Construction Administration phases for the project described above. The following is a list of design services and the consultants that are proposed for inclusion in our Prime Agreement for complete basic services with the Owner:

- SVPA Architects Inc: Architect of Record and Interior Design
- Twin Rivers Engineering Consultants: Mechanical, Electrical, Plumbing and Technology
- Tometich Engineering: Structural Engineering

Fee Structure & Contract for Architectural Design Services:

SVPA Architects Inc. • 1466 28th Street, Suite 200 • West Des Moines, IA 50266
515 327-5990 • Fax 515 327-5991 • www.SVPA-Architects.com

SVPA

Architects Inc.

PROJECT: 13077 **PANORAMA CSD FACILITY IMPROVEMENTS REVIEW**

SVPA Architects Inc. proposes to provide complete basic services for the architectural, mechanical/electrical/plumbing/engineering, interior design and limited structural engineering consulting services for the proposed facility improvements to the Panorama Community School District Middle/High School described above. **Basic compensation shall be established as a fixed fee based upon 8.5% percent of the anticipated Total Cost of Construction.** We understand the preliminary Total Construction Cost budget for this project is \$690,000. Should the final Total Cost of Construction be within plus or minus 10% of \$690,000, the lump sum **fixed fee for complete basic services shall be Fifty Eight Thousand Five Hundred Dollars (\$58,500).** In the event that the project scope changes by more than 10% we will amend the fee structure according to 8.5% of the Total Construction Cost. The Total Cost of Construction shall include; demolition, general building & core construction costs, renovation costs, mechanical, electrical, plumbing, and technology costs, and costs for interior finishes. Fixtures, furnishings and equipment designed or specified by SVPA Architects Inc. shall also be included in the Total Cost of Construction.

We would propose to establish an agreement in accordance with the Standard Form of Agreement Between Owner and Architect AIA Document B104 (2007 edition). Monthly invoices will be submitted based upon the percentage of work completed per the Design Phase Fee Schedule listed below. Invoices are due to be paid within 30 days; prompt payment is always appreciated, and is an essential aspect of the overall consideration required for SVPA Architects Inc. to continue providing services. If Additional Services are requested beyond the scope of basic services as outlined in the Standard AIA Form of Agreement Between Owner and Architect, they will be billed per our attached standard hourly rates. Reimbursable expenses for items such as printing, shipping, and travel mileage are in addition to basic services and will be billed at 1.0 times cost directly to the Owner.

Percentage of Total Fee per Design Phase:

1. Schematic Design Phase:	15%
2. Design Development Phase:	15%
3. Construction Documents Phase:	45%
4. Bidding and Negotiation Phase:	5%
5. Construction Administration Phase:	20%
Total:	100%

SVPA Architects Inc, 2014 Hourly Compensation Rates:

DESIGNATED SERVICES effective January 1, 2014 through December 31, 2014

Compensation for Services shall be at a fixed rate per hour as follows:

• Principal	\$130/hr.
• Senior Associate	\$115/hr.
• Associate	\$105/hr.
• Senior Architect	\$95/hr.
• Architect	\$90/hr.
• Intern Architect	\$80/hr.
• Senior Interior Designer	\$95/hr.
• Interior Designer	\$80/hr.
• Intern Interior Designer	\$75/hr.
• Project Coordinator	\$75/hr.
• Senior CAD Technician	\$80/hr.
• CAD Technician	\$70/hr.
• Graphic Designer	\$75/hr.
• Architectural Administrator	\$50/hr.

SVPA

Architects Inc.

PROJECT: 13077 **PANORAMA CSD FACILITY IMPROVEMENTS REVIEW**

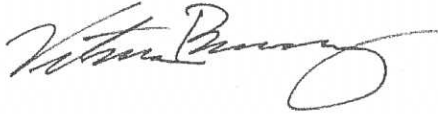
Reimbursable Expenses:

are in addition to compensation for Basic and Additional Services and include expenses incurred by the Architect and the Architect's consultants directly related to the Project, as follows:

- .1 Transportation and authorized out-of-town travel and subsistence;
- .2 Long distance services, dedicated data and communication services, teleconferences, Project Web sites, and extranets;
- .3 Fees paid for securing approval of authorities having jurisdiction over the Project;
- .4 Printing, reproductions, plots, and standard form documents;
- .5 Postage, handling and delivery;
- .6 All taxes levied on professional services and on reimbursable expenses.

Again, we thank you for contacting SVPA Architects for your design and planning needs. We are excited about the opportunity to provide professional services to the Panorama Community School District. If this proposal is acceptable, please sign and return one copy of this letter agreement to our office. If you have any questions please don't hesitate to contact me at (515) 280-2403.

In the Interest of Service,



Vitus Bering, AIA
Vice President/CFO

Accepted by:

Signature

Date

Name & Title: Panorama Community School District